

THE CONTRIBUTION OF THE REGIONAL RESOURCE HUB TO BIODIVERSITY MONITORING IN EASTERN AND SOUTHERN AFRICA



Delivering information for better decisions

Regional Resource Hub Host



With the support of



Donors & Partners

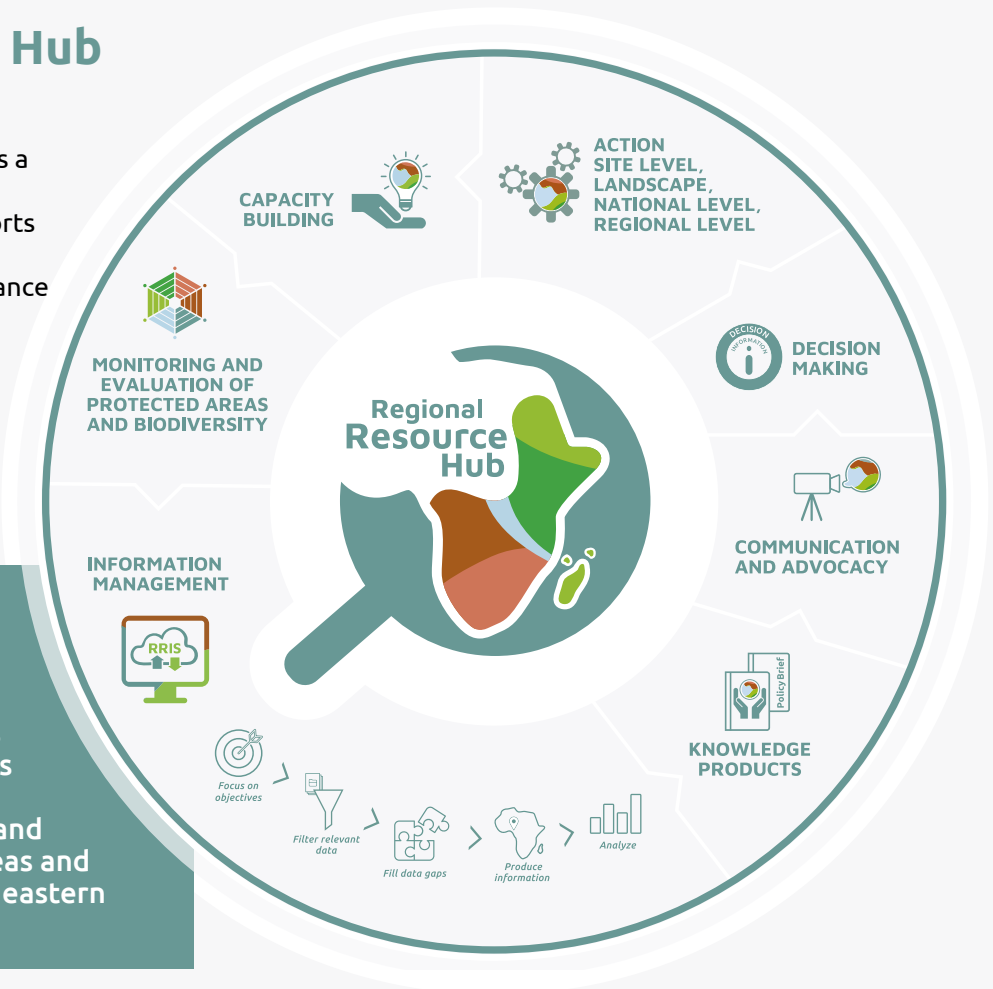


Regional Resource Hub Delivering information for better decisions

Regional Resource Hub mandate

The Regional Resource Hub (RRH) is a knowledge hub for the Eastern and Southern African region that supports better decision making for fair and effective management and governance of protected and conserved areas. The Hub compiles and analyzes relevant data and provides information to support field interventions, policy dialogues and decision-making processes at local, national and regional levels.

The Regional Resource Hub offers information management systems and tools, capacity building, knowledge sharing products and communication activities aiming to reinforce the management effectiveness and governance of protected areas and surrounding communities in eastern and southern Africa region.



The Regional Resource Hub Information System is free, secure and built using open-source technologies. It hosts a broad range of data that can be stored and used, such as field data, indicators, satellite imagery, maps, photos and documents.

Data management services:

- Collects data on protected and conserved areas in collaboration with United Nations Environment Programme World Conservation Monitoring Centre (UNEP-WCMC), for inclusion in the Regional Resource Hub and Protected Planet Initiative databases, World Database on Protected Areas (WDPA), World Database on Other Effective Area-Based Conservation Measures (WD-OECM), Global Database on Protected Area Management Effectiveness (GD-PAME), adhering to global data standards
- Support the development of the Protected Area Governance and Equity (PAGE) database, which brings together metadata on governance and equity assessments. This is going to be available through the Regional Resource Hub in the future
- Develops and provides protected and conserved area statistics which help measure progress towards area-based conservation targets
- Integrates management, governance and social assessments of protected and conserved areas and provides links to the relevant global methodologies and reference databases, in line with the requirements of the UN Convention on Biological Diversity (CBD)
- Provides a range of relevant information at protected and conserved area and country scale from global datasets (e.g. land cover change, water and forest dynamics, carbon stock etc.)
- Produces statistical and spatial analyses
- Transforms data into indicators to support decision-making

Community Hub:

- Communicates activities to increase awareness and access to information for partners through newsletters, website, events and conferences.
- Hosts dialogues in support of the development of communities of practices in the region

Enhancing capacities:

- Builds capacity, trains and shares knowledge on topics such as: GIS, scientific data analysis, data management, use of assessment tools (e.g. IMET coaches, SAGE facilitators) and governance

Regional Resource Hub products

- **Relevant resources, metadata and datasets** of protected and conserved areas in the region.
- Knowledge sharing products (such as infographics, story maps and **SOPACA**)
- **Conservation tracking tool** - Provides quantitative spatial indicators for assessing progress towards specific conservation targets across the region (e.g. CBD, SDGs, Africa elephant action plan, national plans)
- **Protected Area dashboard** - an overview of key information on protected and conserved areas: where they are, how many, which designation they have, type of management and governance, etc.
- **Support to PAME and PAGE assessments:** Guidance documents for assessment tools, communities of practice on use of the tools, regional support to the development and maintenance of databases of such assessments (GD PAME; GD PAGE)
- **Country profiles:** facts and figures on biodiversity and protected and conserved areas in each ESA country, combining qualitative and quantitative information.



Regional State of Protected and Conserved Area Reports (SOPACA) - First edition launched in November 2020 –next edition is planned for 2023). The SOPACA reports include the latest information on protected area coverage, management, governance, and connectivity in the ESA region, as well as a review of protected area issues of particular relevance to the region, including financing of protected areas, transboundary conservation, private protected areas and community engagement in protected areas. They also include recommendations for strengthening protected and conserved area governance and equity and management effectiveness in the region.

Regional Resource Hub coverage

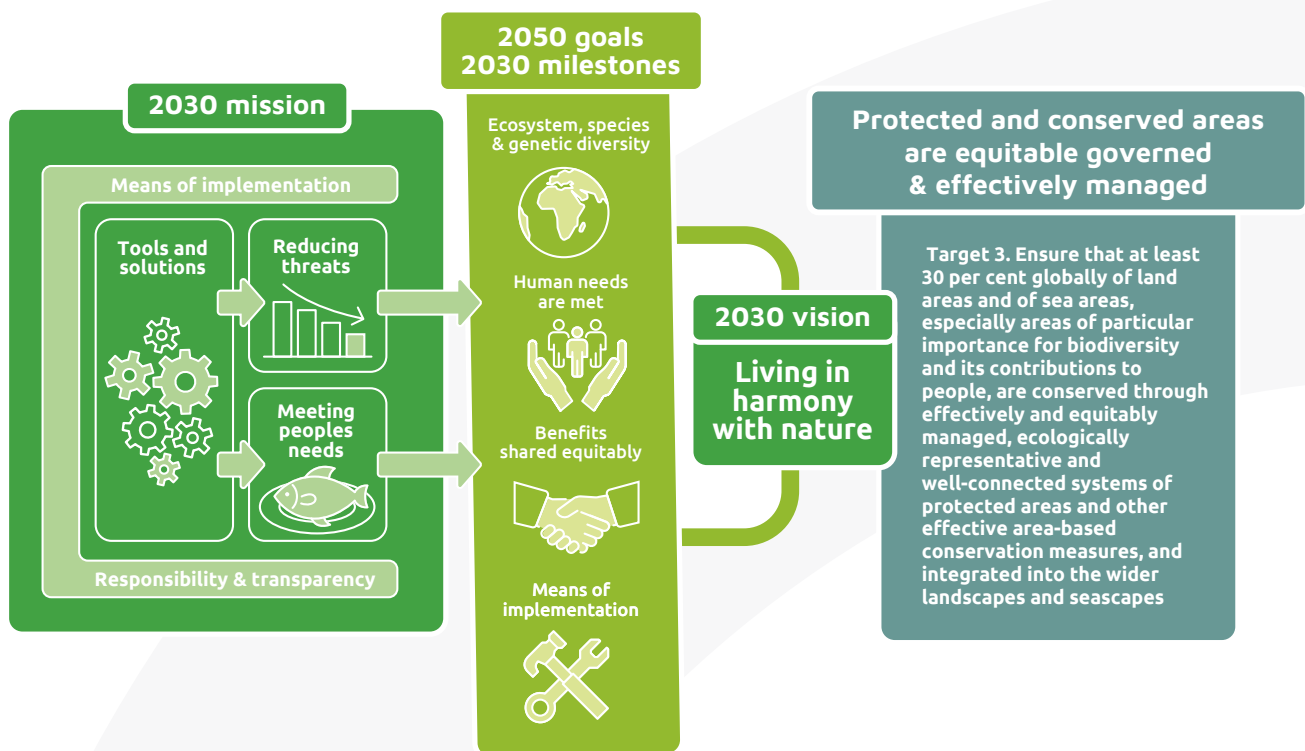
EASTERN & SOUTHERN AFRICA



Convention on Biological Diversity and the adoption of a post-2020 global biodiversity framework

During the fifteenth meeting of the Conference of the Parties (COP-15) in Montreal, Canada, from 7 to 19 December 2022, the Convention on Biological Diversity will adopt a post-2020 global biodiversity framework as a stepping stone towards the 2050 Vision of “Living in harmony with nature”.

POST-2020 GLOBAL BIODIVERSITY FRAMEWORK AND DRAFT TARGETS



The post-2020 global biodiversity framework provides a strategic vision and a global roadmap for the conservation, protection, restoration and sustainable management of biodiversity and ecosystems for the next decade.

The process adopted by Parties to develop the post-2020 global biodiversity framework contains a set of principles to guide its implementation, an organization of work and sets out a comprehensive consultation process, including provisions for global, regional and thematic consultation meetings.

Draft One of the post-2020 global biodiversity framework, released in July 2021, builds on lessons learned from the Strategic Plan for Biodiversity 2011-2020 and its Aichi Biodiversity Targets. It recognizes that urgent policy action globally, regionally and nationally is required to transform economic, social and financial models so the trends that have exacerbated biodiversity loss will stabilize by 2030 and allow for the recovery of natural ecosystems, with net improvements by 2050. To check the most updated information on the draft documents visit this webpage: cbd.int/conferences/post2020

From knowledge to action in support of the global biodiversity framework

The Regional Resource Hub helps to achieve:

- Improved decision-making at local, national and regional levels by collating and managing high quality and verified biodiversity datasets and information.
- An open-data practice as a regional resource by making these data and information available freely and by promoting and encouraging their use.
- Effective tracking of progress against global, regional and national biodiversity goals such as the Strategic Plan for Biodiversity 2011-2020, progress towards the Aichi Targets and the Sustainable Development Goals, and the forthcoming Global Biodiversity Framework.

Therefore, the Regional Resource Hub makes a direct contribution to the objectives of the Global Biodiversity Framework. For Eastern and Southern Africa, the Regional Resource Hub is ideally placed to be the proposed “regional cooperation support centre”, mentioned in the first draft of the post-2020 global biodiversity framework.

- The Regional Resource Hub catalyses and facilitates technical cooperation and technology transfer. It facilitates liaison between Parties and stakeholders and it provides tailored support to Parties’ needs and requirements.

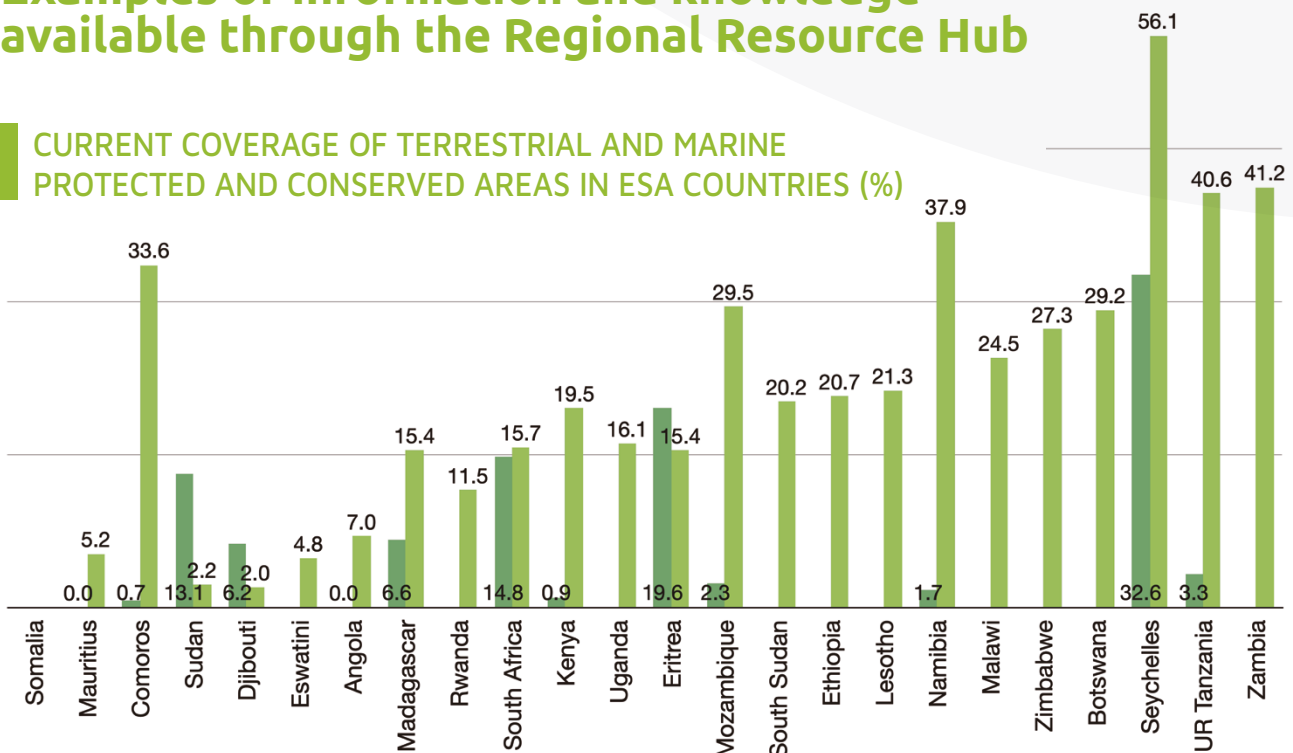
By highlighting progress against global targets, and more particularly the headline indicators of the monitoring framework for the post- 2020 global biodiversity framework, the Regional Resource Hub will support Parties by enhancing planning, reporting and review mechanisms.

Use the Regional Resource Hub to:

- Develop your next CBD report
- Identify priorities at national or site level
- Inform policy development at national and regional level

Examples of information and knowledge available through the Regional Resource Hub

CURRENT COVERAGE OF TERRESTRIAL AND MARINE PROTECTED AND CONSERVED AREAS IN ESA COUNTRIES (%)

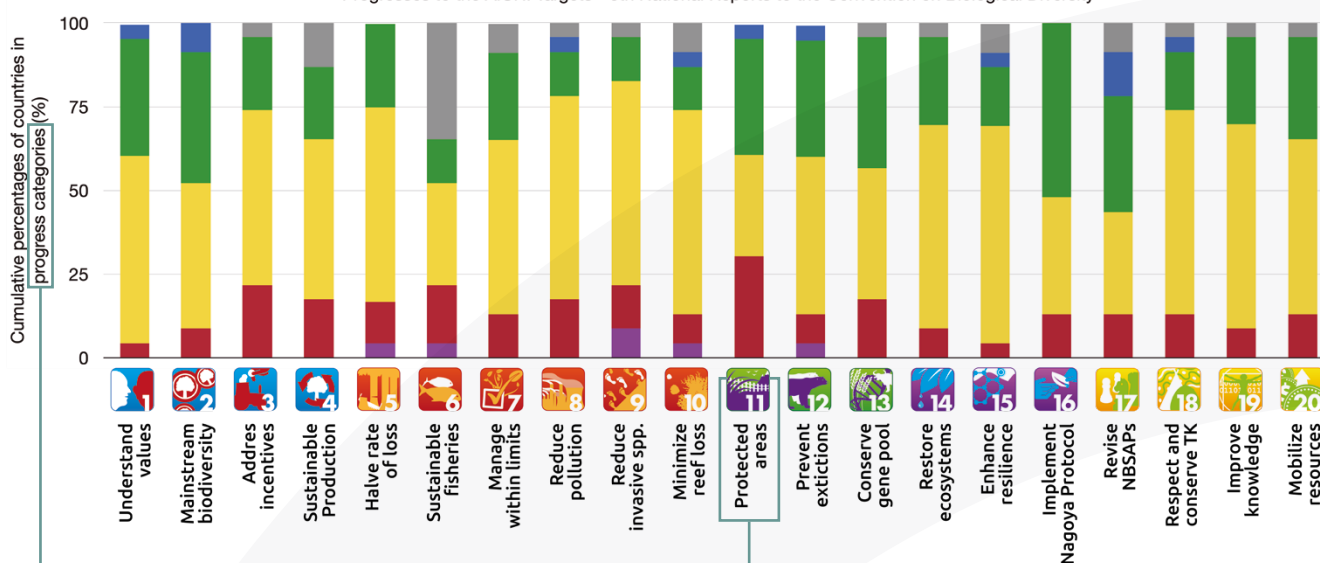


RRH offering for monitoring of global targets:

- Dashboards on area coverage, Governance and Management types and assessments;
- Capacity development on data management and analysis;
- Country profiles that can be customised with the countries;
- Regular publication of the State of Protected and Conserved Areas in Eastern and Southern Africa report (next due in 2023).

HOW WELL ESA COUNTRIES PROGRESSED TOWARDS AICHI TARGETS?

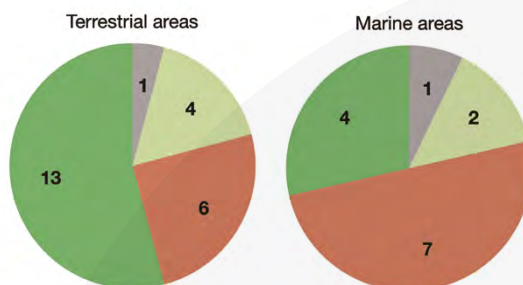
Progresses to the AICHI Targets - 6th National Reports to the Convention on Biological Diversity



Category of progress	Definition	Range
	Moving away from target The issues the target is seeking to address are deteriorating. Reasons for this could be because the pressures on biodiversity are increasing, or other changes to national circumstances, the measures taken have not yet had an impact, the actions taken have been ineffective and/or because no significant measures have been taken.	0%
	No significant change No significant changes have been observed. Reasons for this could include that the measures taken have not yet had an impact, the measures taken have been ineffective, or that no significant measures have been taken.	1-25%
	Progress towards target but at an insufficient rate Significant progress towards the attainment of the target has been made, however insufficient for the target to be met by the deadline unless further measures are taken.	26-50%
	On track to achieve target The measures which have been taken and the current status of the issues addressed by the target will be met by the target deadline.	51-75%
	On track to exceed target The national measures taken will allow for the criteria/thresholds established by the target to be exceeded by the target deadline. In the case of those targets with quantitative elements, this would mean that the identified threshold would be surpassed. In the case of qualitative targets, this would mean that the actions or conditions required to be met have been surpassed.	76-100%
	Unknown The progress towards the attainment of this target is unknown. This could be because the available information is inconclusive or because no assessment has been undertaken.	



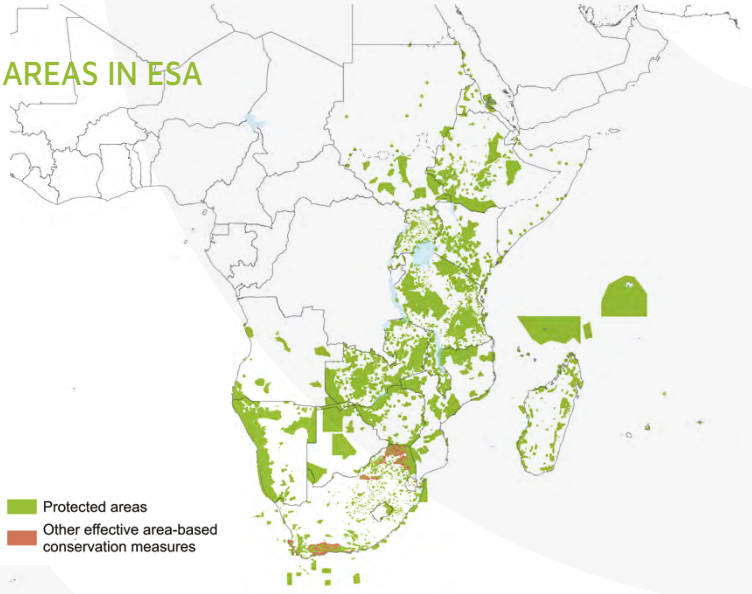
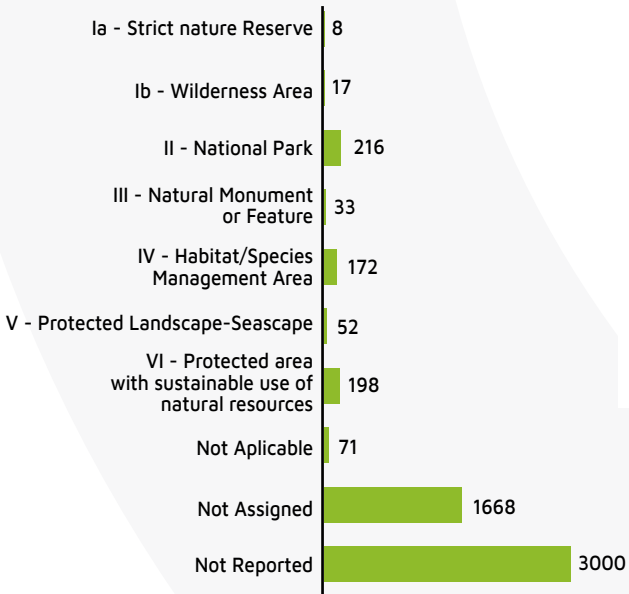
AICHI TARGET 11: HOW WELL ESA ACHIEVED THE 2020 TARGET OF PROTECTED AND CONSERVED AREAS COVERAGE?



- countries exceeded the target
- countries almost achieved the target
- countries far from achieving the target
- no data

TYPES OF PROTECTED AND CONSERVED AREAS IN ESA

Number of protected and conserved areas

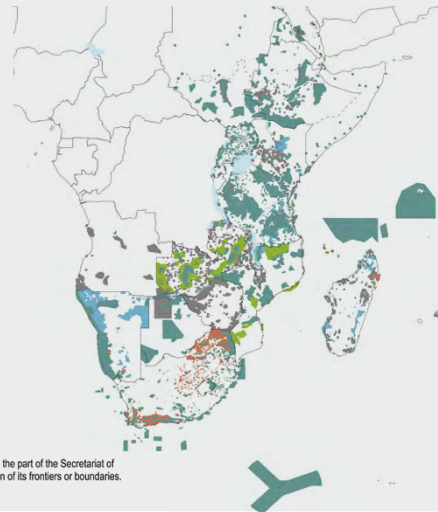
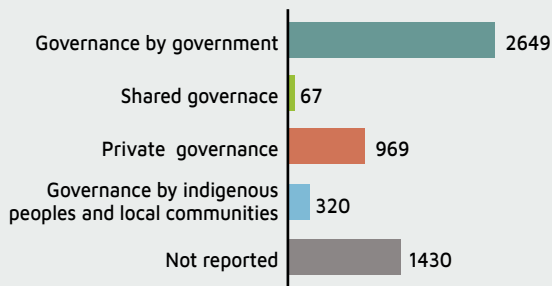


* Final boundary between the Republic of Sudan and the Republic of South Sudan has not yet been determined.
 * Final status of the Abyei area is not yet determined.

The designations employed and the presentation of material on this map do not imply the expression of any opinion whatsoever on the part of the Secretariat of the United Nations concerning the legal status of any country, territory, city or area or of its authorities, or concerning the delimitation of its frontiers or boundaries.

GOVERNANCE TYPES IN ESA

Number of protected and conserved areas

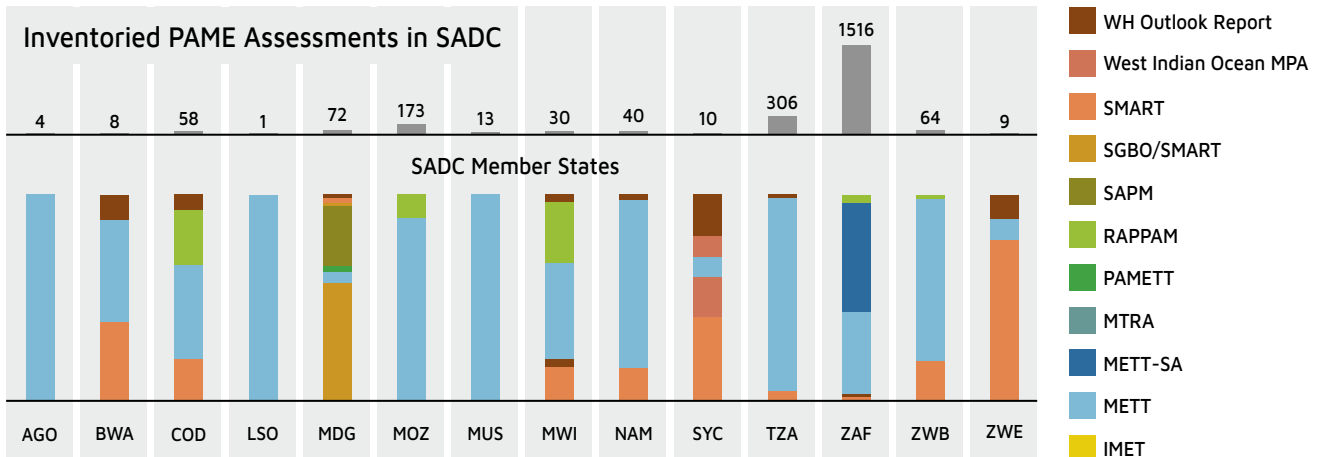


* Final boundary between the Republic of Sudan and the Republic of South Sudan has not yet been determined.
 * Final status of the Abyei area is not yet determined.

The designations employed and the presentation of material on this map do not imply the expression of any opinion whatsoever on the part of the Secretariat of the United Nations concerning the legal status of any country, territory, city or area or of its authorities, or concerning the delimitation of its frontiers or boundaries.

PROTECTED AREA MANAGEMENT EFFECTIVENESS ASSESSMENTS

Inventoried PAME Assessments in SADC



Endorse the Regional Resource Hub as your regional reference information centre!

Learn more

Provisional Agenda of the Subsidiary
Body on Implementation on Capacity
Development, Technical and Scientific
Cooperation and Technology Transfer



Contact us



esahub.rcmr.org



rrh@rcmr.org



*Delivering information
for better decisions*

Regional Resource Hub Host



RCMRD

With the support of

BIOPAMA

From Knowledge to Action for a Protected Planet

Donors & Partners

